

Fleeteyes

Fleet vehicle GPS tracking, dispatch, and mapping

Overview

Fleeteyes is a market-leading vehicle management solution that offers a proven set of tools for efficient tracking of EMS vehicles. Seamless integration with a variety of CAD systems and GPS devices, including Garmin® navigators and AVL-capable modems, ensures the effective exchange of critical information between dispatch systems and vehicle crews. Fleeteyes provides rich visual data on vehicle location, weather and traffic.

Key Benefits

- Clearer visibility into available vehicles and statuses
- Improves vehicle ranking and assignment
- Connects dispatchers with vehicle crews
- Mutual-Aid allowing partner companies to share information

Organizations

- Emergency Medical Services (ground, air)
- Fire Departments
- Police Dispatch

Use Case

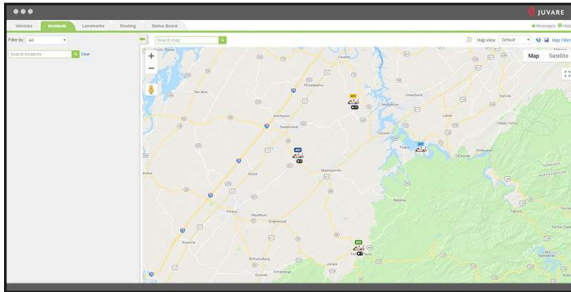
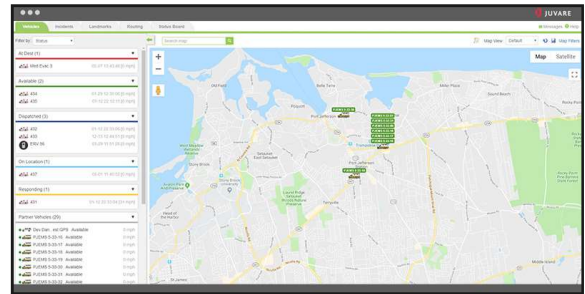
- EMS/Fire dispatch and tracking



Fleeteyes

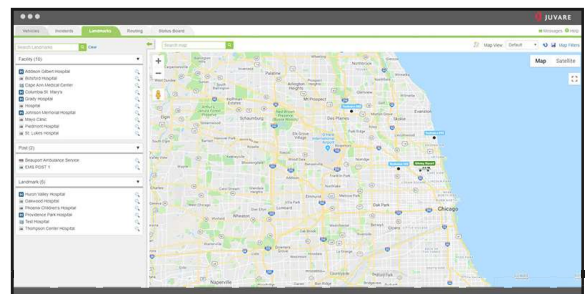
Locate Vehicles Quickly

Find available vehicles quickly and determine the closest to the incident using data plus mapping. Automatically calculate driving distance and arrival times with the Fleeteyes Candidate Ranking feature.



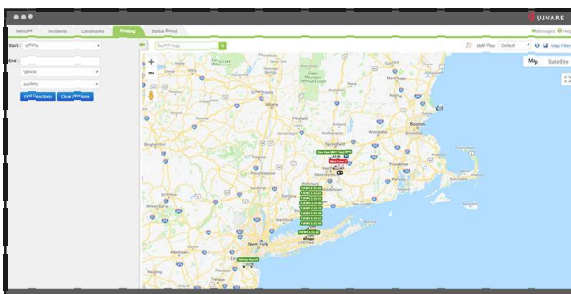
Stay Connected via Mobile Data Tablet

Send and receive the latest updates regarding ongoing incidents and communicate timelines and location to dispatch center using Computer Aided Dispatch (CAD) software. The Android Mobile Data Tablet™ streamlines data exchange between dispatch and vehicle crews.



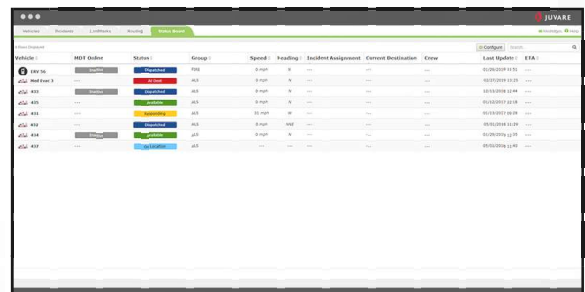
Instant Communication

Inform all users of the type of incident, such as when a vehicle is responding to an active shooter or if a crew has left the hospital without notifying dispatch of their status.



Call Playback

Retrieve information and perform quality assurance checks to ensure the most efficient incident response. Historical data, including routes taken during an incident is stored on every vehicle.



Fleet at a Glance

See active vehicles and their status, speeds, direction, destinations and other fleet details at a glance with the Fleeteyes status board. Information on the board can come from a CAD system or vehicle's GPS.